



Overview of the HEPMP project's goals and project implementation

Prof. Dr Predrag Stevanovic
Project coordinator



Strengthening Capacities for Higher Education of Pain Medicine in Western Balkan Countries (HEPMP)

Coordinator of the project is **School of Medicine, University of Belgrade**

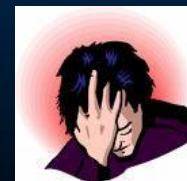
- Project consortium are universities from PCs :
 - Faculty of Medicine, **University of Kragujevac** (Serbia),
 - Faculty of Medicine, **University of Banja Luka** (Bosnia and Herzegovina)
 - Faculty of Medicine, **University of Tuzla** (Bosnia and Herzegovina)
 - Faculty of Medicine, **University of Podgorica** (Montenegro)
 - **University Clinical Hospital Center „Dr Dragisa Misovic-Dedinje“**, Belgrade Serbia

- Universities from PgCs:
 - School of Medicine of the University of **Florence** (Italy),
 - Faculty of Medicine of the University of **Rijeka** (Croatia),
 - Medical Faculty of the University of **Ljubljana** (Slovenia).



WHY HEPMP project?

- Serbia ---life expectancy (72.3 years) --with high levels of heart disease, stroke, and cancer.
- Cancer is the second most frequent cause of death in Serbia
- **low awareness of PM care** amongst the public and health care professionals
- **The TEMPUS Palliative and Pain Medicine project** 2007- 2009 as part of an initiative of the Universities of Florence and Lyon in cooperation with the School of Medicine at the UB -postgraduate education of *palliative and pain medicine*.
- Recognized through a National Palliative Care Strategy (2008) and National Programme Serbia Against Cancer
- The program of postgraduate subspecialty of PM was accredited in 2013 at UB. So far, 60 postgraduate students were enrolled in it.
- Number of doctors trained for PM *is insufficient*.





Strategy of the WHO in 2020

- The main aim of HEMP project is to increase quality of education in PM in order to contribute to the improvement of public health care services in PCs in line with the Health 2020.
- Increase the quality of health care of the population in line with the strategy of the World Health Organization in 2020 and its Health Priority area 3.
- Priority area 3. consider strength of people-centred health systems, public health capacity and emergency preparedness, surveillance and response.
- One of the priorities of the strategy Health 2020 is improvement of the quality of medical services and continuously adapt to changing patterns of disease.



HEPMP aims

- **Strengthening Capacities for Higher Education of Pain Medicine in Western Balkan Countries**
- This project aims are supporting the development of Pain medicine service provision in the country by providing qualified trained staff.
- Support will be granted to operationalise the recently established an educational program in the form of pain medicine specialization and the possibility of the development of undergraduate education programs.
- Establish an academic network and improve professional cooperation through opportunities provided by new technologies (Internet, telemedicine, etc.)



Tasks of the project

Tasks of the Universities of Program countries

- assist in the analysis of the current situation in this area in PCs
- defining the possible changes that would improve or introducing curriculum of PM
- training of trainers from PCs
- organizations of internship of students from Universities from PCs in the centers for pain in PgCs.





Tasks of the project

Tasks of Universities of Partner countries

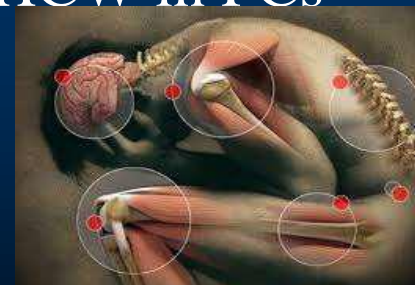
- to modernize the existing curriculum PM specialty
- to develop a module lectures for undergraduate studies of PM
- to develop a web platform for mutual learning and communication for professionals who deal with PM
- to organize courses of PM for doctors in primary health care
- develop written material for LLL (books, brochures, scripts, leaflets, digital material)
- establish an academic network



WP1- Comparative analysis of education offer in PM- First year

AIM--to determine the existing differences in methodological approach, as well as the program itself

- Analysis of PM study program and LLL courses in PCs
- Analysis of PM study program and LLL courses in PgCs
- Comparative analysis of education offer of PM in the PCs and PgCs
- Analysis of labour market needs relevant for HCW in PCs
- *Purchase and installation of equipment*





WP2--Development of joint curricula for PM study program

- Training of existing teaching staff from PCs at PgCs
- Development of HEPMP contents and Teaching material

joint curricula for PM

LLL courses

- Preparation and submission for accreditation of study program
- Enrollment of students at study program
- Implementation of study programs

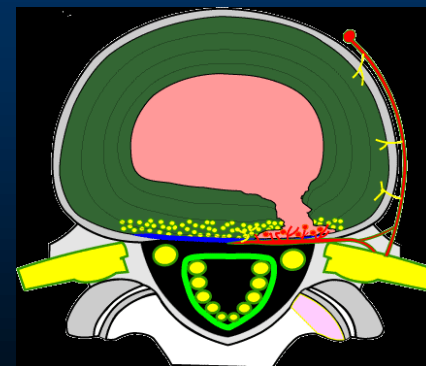


Courses

Training for the two target groups:

I type of courses - for HCWs who work in **primary health care centres** and daily dealing with the management of PM,

II type of courses - **highly specialized training** for the treatment of pain for doctors who work in tertiary institutions.





WP3 -Development of LLL courses and interventional PM courses

- Development of learning material for HCW in PCs
- National call and selection of trainees
- Accreditation of LLL courses in PCs
- Delivering of LLL courses of PM in primary health care centers of PCs
- Delivering of interventional pain trainings in PCs





WP4-Establishment of Academic network

- Establishment of regional academic network
- Establishment of PAINWeb platform
- Continous selection of case studies for students and HCWs education
- Analysis of systematic standards and procedures in the area of PM

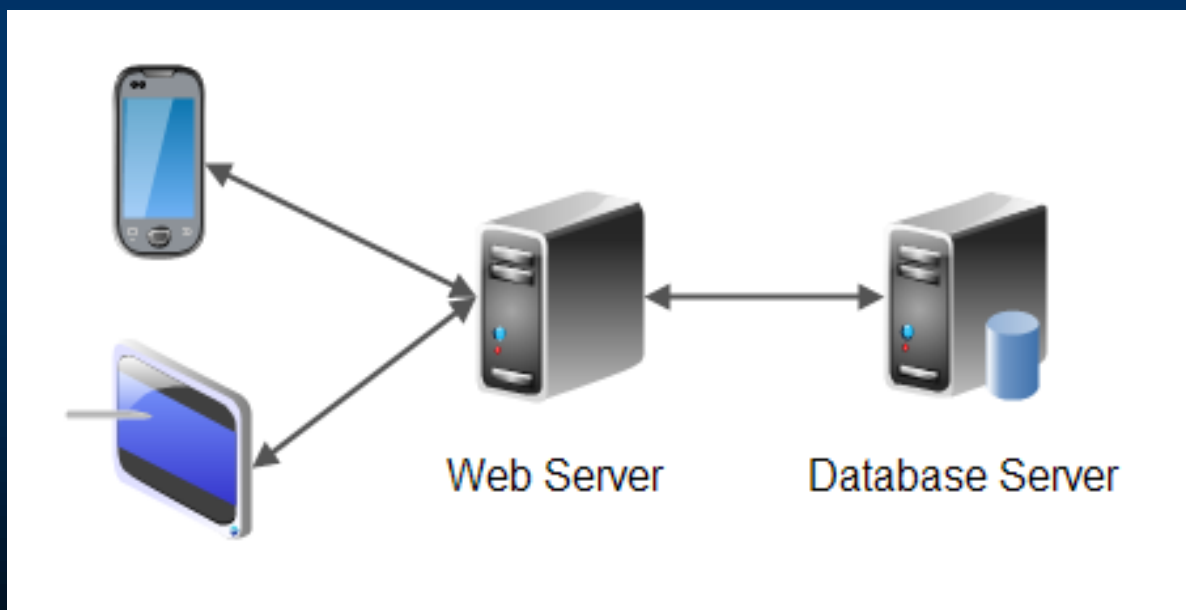


Academic Pain Management Network - APMN

Academic Pain Management Network - APMN

This is a software system composed of two parts:

- Web server application
- Application for mobile devices (IOS and andorid)



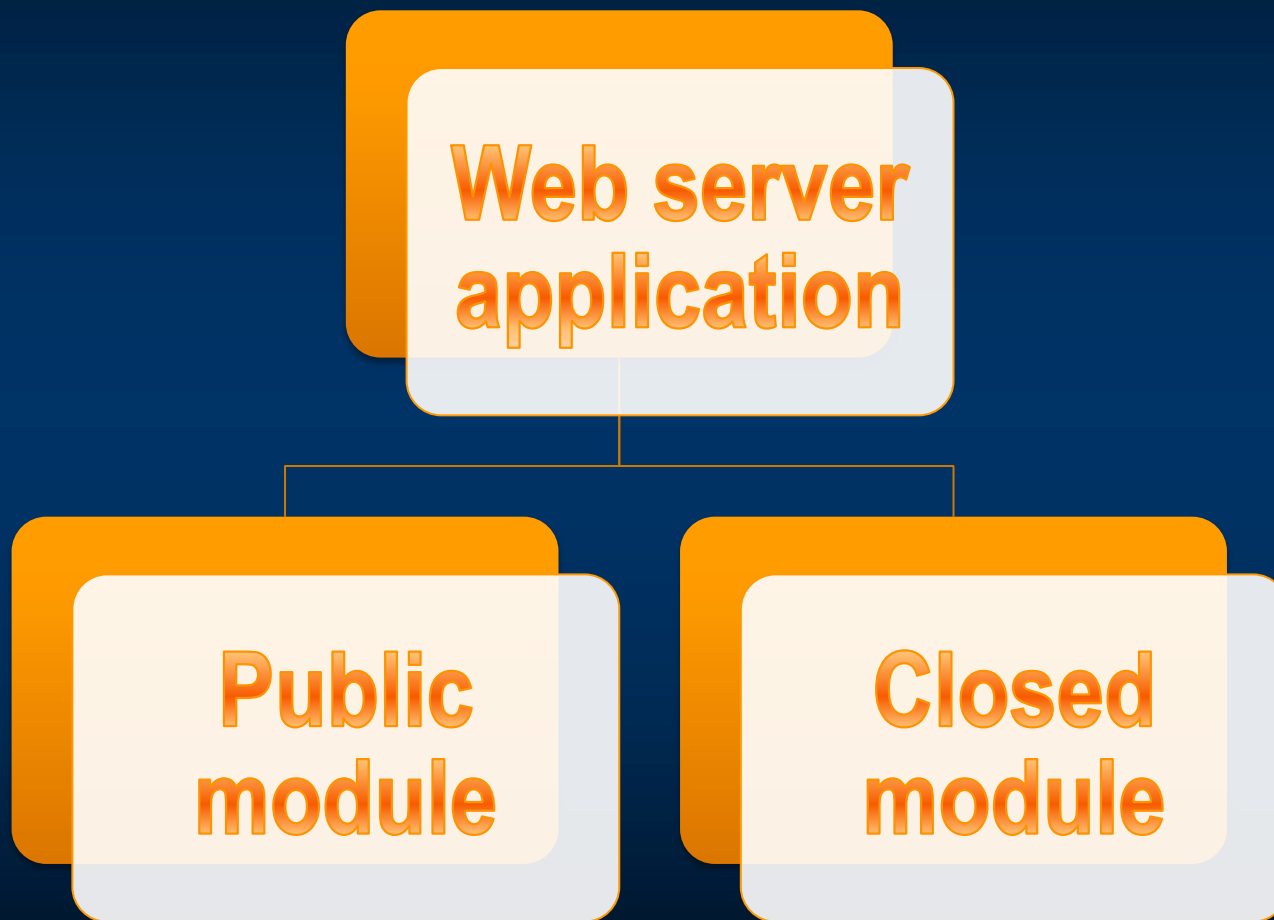
Why web server?

Web server application is independent of operative systems, so it is visible (usable) from all devices like mobile phones, tablets, desktop and laptop computers ...





Web server application





Public module

- This is actually a classic forum for all doctors or anyone interested in sharing information, messages, opening topics, publishing works, etc.

The screenshot shows the homepage of the PAINRESEARCHFORUM website. The header includes the site name "PAINRESEARCHFORUM" with the tagline "Progress through collaboration". Navigation links include CONTACT, SUPPORT US, NEWSLETTER, RSS FEED, and TWITTER. A secondary navigation bar offers WELCOME GUEST, LOG IN, JOIN, and WHY JOIN? options. A main menu features About, News, Papers of The Week, Forums, Members & Community, and Research Resources. A search bar is located on the right. The main content area features a featured article titled "When Cancer Treatment Packs a Painful Punch" with a sub-headline "Research is offering up new targets for preventing or treating painful chemotherapy-induced neuropathy. Read more...". Below this are sections for "News" and "Forums". The "News" section highlights a post from June 25, 2014, titled "PRF Announces Partnership With American Pain Society". The "Forums" section highlights a webinar titled "Webinar: Autoimmune Causes of Chronic Pain" scheduled for June 02, 2014, featuring the PRF Team and Andreas Goebel. A "MOST POPULAR CONTENT" section is also visible on the right side of the page.

PAINRESEARCHFORUM
Progress through collaboration

CONTACT | SUPPORT US | NEWSLETTER | RSS FEED | TWITTER

WELCOME GUEST | LOG IN | JOIN | WHY JOIN?

About News Papers of The Week Forums Members & Community Research Resources

Search... Q

✉ 🖨️ ➕ SHARE A A

When Cancer Treatment Packs a Painful Punch

Research is offering up new targets for preventing or treating painful chemotherapy-induced neuropathy. [Read more...](#)

1 2 3 4 5

News →

JUN 25 2014 **PRF Announces Partnership With American Pain Society**
APS will sponsor popular Papers of the Week feature, to benefit pain research community.

Forums →

JUN 02 2014 **Webinar: Autoimmune Causes of Chronic Pain**
PRF Team
PRF will host a webinar with **Andreas Goebel**, University of Liverpool and The Walton Centre NHS Foundation Trust.

MOST POPULAR CONTENT

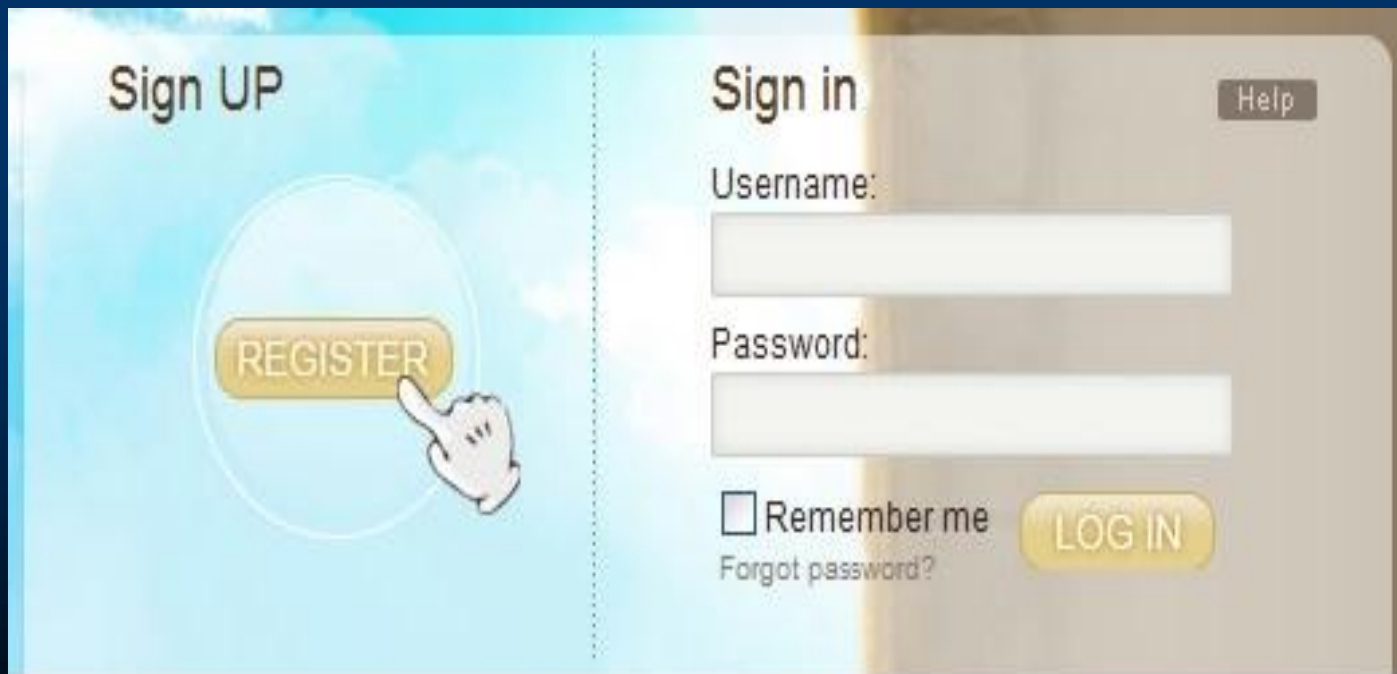
COMMENTED ON | VIEWED | EMAILED

A Move Toward Sex Equality in Preclinical Research

SEE FULL LIST

Closed module

- It is a closed application that is available only to an authorized group of doctors, which means that access to the application is only possible after authorization.



The screenshot shows a web application interface with two main sections: 'Sign UP' and 'Sign in'.

Sign UP: This section features a large, light blue circular graphic with a yellow 'REGISTER' button in the center. A hand cursor is pointing at the button.

Sign in: This section includes a 'Help' button in the top right corner. Below it are two input fields: 'Username:' and 'Password:'. Under the 'Password:' field, there is a checkbox labeled 'Remember me' and a link for 'Forgot password?'. A yellow 'LOG IN' button is positioned at the bottom right of the sign-in area.



First step

- In the application, after selecting the patient type form and adding the document (Uniform form of examination, ECG, lab, Ro, TS, NMR ...), we form a colleague's request or a selected group of colleagues.

Alerts (0) | Notifications (5) | Secure File Transfer | User Profile | Log Out | Julio Derecho | 102636 USF DIALYSIS CENTER-CROWNWeb - Facility

CMS.gov QualityNet | Search QualityNet.org

Home - Quality Programs - My Reports - My Tools - Help -

CROWN Home | Patients | **Clinical** | Facilities | Form 2744 | CROWN Reports

Manage.Clinical

- Anemia Management
- Adequacy
- Mineral Metabolism
- ESA
- Infection
- Iron
- Fluid Weight Management
- Hospitalization
- Vaccination

Patient Reporting

Version Number : CROWNWeb 5.0.1-18534

Manage Patient Clinical Values

Info:
• Successfully submitted clinical data.

Patient Information

5 Facility CCN 5 Facility NPI Go 5 Facility DBA Name

*Collection Type *Clinical Month Last Name Group Display Patients Go

Patient Common Lab Test Date

Patient Details

Patient Number	Patient Name	Date of Birth	SSN
2104874379	Mary Patient	02/02/1952	234-56-7890

Save Submit Reset Delete No Clinical Data Available For All Collection Types

Clinical Values

Status : Submitted

Anemia Management

*Hemoglobin (Hgb) (g/dL)	<input type="text" value="10.0"/>	<input type="checkbox"/> N/A	<input type="text" value="07/15/2016"/>
*Ferritin (ng/mL)	<input type="text" value="2000"/>	<input type="checkbox"/> N/A	<input type="text" value="07/15/2016"/>
*Iron Saturation (TSAT) (%)	<input type="text" value="60"/>	<input type="checkbox"/> N/A	<input type="text" value="07/15/2016"/>
*Reticulocyte Hemoglobin (CHR) (pg)	<input type="text" value="30"/>	<input type="checkbox"/> N/A	<input type="text" value="07/15/2016"/>

Adequacy

Kt/V	<input type="text" value="1.2"/>	<input type="checkbox"/> N/A	<input type="text" value="07/15/2016"/>
Kt/V Method	<input type="text" value="UKM (Urea Kinetic Modeling)"/>		
*Blood Urea Nitrogen (BUN) Pre-Dialysis (mg/dL)	<input type="text" value="100"/>	<input type="checkbox"/> N/A	

The second step

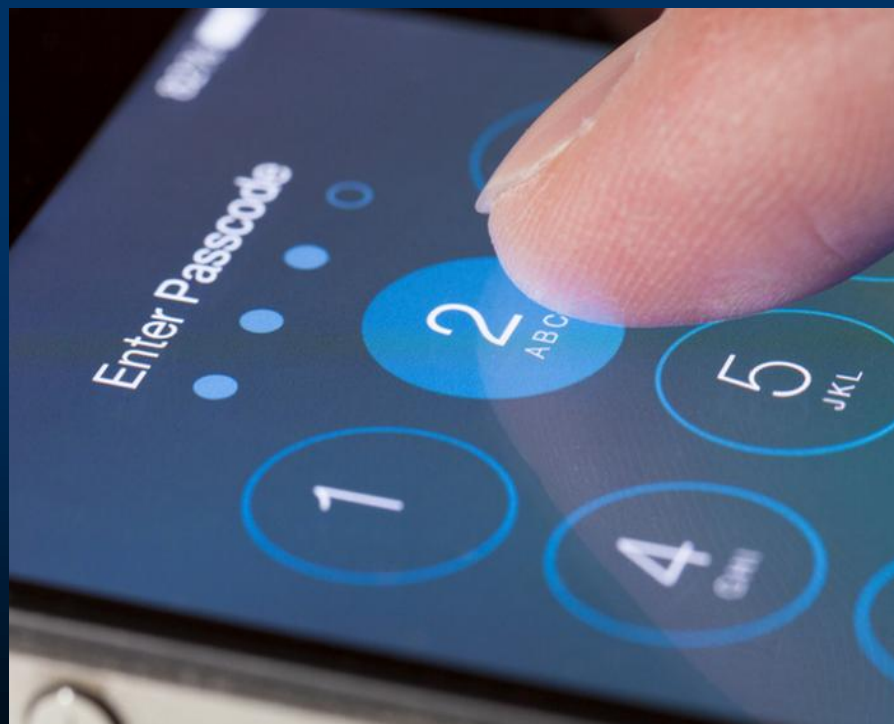
- Sending a query generates a notification on mobile devices





Third step

- After authorization through the APMN mobile application





- Colleagues get access to that form of query. After examining the queries, the data and documents, your colleagues make a decision to receive, give their opinion or advice, or make a decision on receiving the patient, indicate possible steps in the treatment.
- (Electronic Consultation)

Editing Admit/Discharge Info

Facility Editors can edit admit or discharge info for any patients in their scope.

1. **View** the patient attributes
2. View the **Admit/Discharge Summary**
3. Click the **Admit Date**
4. Click **Edit Admit/Discharge**
5. **Edit**, then **Submit**.

Home | Facilities | Patients | Personnel | Reports | EDI | Clinical

Search Patients Admit Patient PART

Navigate This Page

- > Admit/Discharge Summary
- > Treatment Summary

Help

* Indicates a required field to Admit or Discharge a patient.
** Either a CCN or NP1 may be entered for the admitting facility.

Feedback

Having problems? [Submit](#) a feedback report.

Search Patients > Patient Search Results > View Patient Attributes(2104313465) > View Admit/Discharge Summary > View Admit/Discharge(11950307) > Edit Admit/Discharge(11950307)

Edit Admit/Discharge Information Submit Date: 10/20/2008

Patient Admission Information - 2104313465 - Trevor Treverino

* Admit Date: 10/20/2008 * Admit Reason: New ESRD Patient

* Facility DBA Name: ABC Dialysis (2100000281)

** Facility CCN: 123456 ** Facility NP1: 1336117670

* Transient Status: No

Patient Discharge Information

* Discharge Date: mm/dd/yyyy * Discharge Reason:

Involuntary Discharge Subcategory: Transfer Discharge Subcategory:

Patient Activity Comments:

Submit Reset Delete

Purpose of the application

- Reduces the number of visits to the doctor (repeated medical examinations)
- Availability of media documents from all areas
- Multiple consultations
- Minimal spending of all resources (money, fuel, papers, time ...)
- It allows for greater and faster availability of doctors of various profiles who deal with pain for all patients



WP5-Project dissemination

- Creation of Web site of HEPMP
- Pain Medicine Textbook; monograph; script
- Promotion of HEPMP program events
 - Liflet, newsletter, promotional material and media
- Dissemination of institutional websites, newsletter, promotional material and media
- Signing cooperation between HEIs and relevant stakeholders



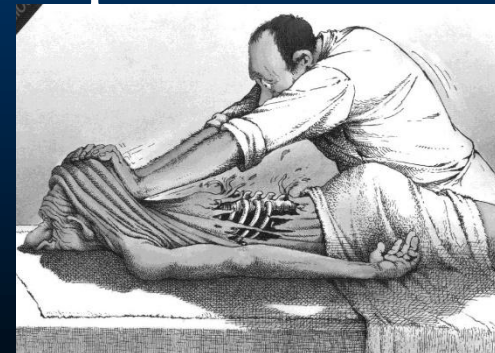
WP6--Quality control

- ❑ Establishment of quality control board
- ❑ Development of control plan for quality assurance in teaching process
- ❑ Regular Quality board meetings
- ❑ Evaluation of student and participant satisfaction Monitoring visits by external evaluators



WP7--Menagement board

- Establishment of menagent board
- Creation of project management guide
- Kick off meeting
- Regular management board meetings
- Making a regular reports and final report





HEPMP

Higher Education Pain Medicine Project